

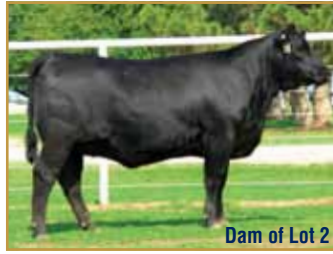


Embryo & Rare Semen Internet Auction

Bidding begins... November 21, 2011 at Noon

Bidding closes... November 22, 2011 at 7 p.m. CST

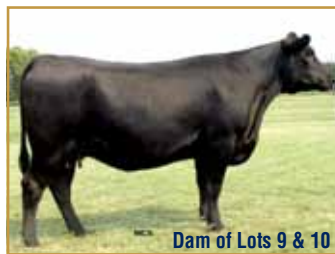
Bid at... www.LiveAuctions.tv



Lot #	Eggs	Sire Name Dam Name	Sire Reg Dam Reg	MGS Name MGD Name	EPDs	BW	WW	YW	Milk	Marb	REA	\$B
1	4	Dameron First Class EXAR Winnie 2655	16175085 15100121	EXAR Lutton 1831 WK Winnie 7305	Sires EPDs Dams EPDs	3.7 1.0	65 53	25 26	104 88	0.27 0.49	0.03 0.20	47.87 63.86
2	4	EXAR Upshot 0562B EXAR Wendy 9600	16541214 16265342	S S Objective T510 OT26 EXAR Wendy 4257	Sires EPDs Dams EPDs	1.3 2.1	61 58	37 25	118 110	0.88 0.44	0.68 0.51	77.35 54.78
3	4	EXAR Upshot 0562B EXAR Rita 7854	16541214 15796700	EXAR 263C Rita 1197 of 2536 Rito 616	Sires EPDs Dams EPDs	1.3 0.9	61 50	37 31	118 97	0.88 0.70	0.68 0.59	77.35 65.33
4	4	EXAR Upshot 0562B Basin Chloe 0T16	16541214 16104242	EXAR 263C Basin Chloe 812L	Sires EPDs Dams EPDs	1.3 0.8	61 51	37 25	118 102	0.88 0.64	0.68 0.31	77.35 60.70



Lot #	Eggs	Sire Name Dam Name	Sire Reg Dam Reg	MGS Name MGD Name	EPDs	BW	WW	YW	Milk	Marb	REA	\$B
5	4	EXAR Upshot 0562B EXAR Primrose 4615	16541214 15269047	Rito 112 of 2536 Rito 616 Summitcrest Primrose 2J02	Sires EPDs Dams EPDs	1.3 -0.4	61 46	37 22	118 88	0.88 0.65	0.68 0.05	77.35 46.67
6	4	EXAR Upshot 0562B EXAR Lucy 5557	16541214 15655289	EXAR 263C Toebben Lucy 3025	Sires EPDs Dams EPDs	1.3 1.7	61 50	37 28	118 93	0.88 0.64	0.68 0.68	77.35 66.21
7	3	EXAR Upshot 0562B Primus Chloe 828	16541214 16098836	G A R Predestined Basin Chloe 6198	Sires EPDs Dams EPDs	1.3 2.6	61 52	37 25	118 97	0.88 0.76	0.68 0.26	77.35 60.94
8	4	EXAR Upshot 0562B EXAR Emulation 9254	16541214 16314023	Basin Franchise P142 EXAR Emulation 4407	Sires EPDs Dams EPDs	1.3 2.2	61 55	37 23	118 100	0.88 0.95	0.68 0.51	77.35 72.67



Lot #	Eggs	Sire Name Dam Name	Sire Reg Dam Reg	MGS Name MGD Name	EPDs	BW	WW	YW	Milk	Marb	REA	\$B
9	4	EXAR Upshot 0562B V A R Rita 8036	16541214 15967296	G A R Predestined G A R Precision 2353	Sires EPDs Dams EPDs	1.3 3.8	61 48	37 27	118 86	0.88 0.87	0.68 0.66	77.35 68.78
10	5	Connealy Consensus 7229 V A R Rita 8036	16447771 15967296	G A R Predestined G A R Precision 2353	Sires EPDs Dams EPDs	1.3 3.8	83 48	20 27	134 86	0.89 0.87	0.20 0.66	71.45 68.78
11	4	Connealy Consensus 7229 Three Trees Blackcap 3471A	16447771 14709950	G A R Grid Maker G A R Lucys Boy 2118	Sires EPDs Dams EPDs	1.3 2.6	83 54	20 29	134 94	0.89 0.48	0.20 0.31	71.45 38.69
12	5	Connealy Consensus 7229 EXAR Forever Lady 81016	16447771 15934952	Stevenson Moneymaker R185 Twin Hills Forever Lady 2237	Sires EPDs Dams EPDs	1.3 3.3	83 62	20 16	134 116	0.89 0.32	0.20 0.46	71.45 50.39



Sire of Lots 13, 14 & 15



Dam of Lot 13



Dam of Lot 15



Sire of Lot 16

Lot #	Eggs	Sire Name Dam Name	Sire Reg Dam Reg	MGS Name MGD Name	EPDs	BW	WW	YW	Milk	Marb	REA	\$B
13	4	Summitcrest Complete 1P55 OSU Empress 5179	14850409 15051843	N Bar Emulation EXT O S U Empress 6188	Sires EPDs Dams EPDs	2.6 1.8	55 39	30 21	101 75	0.62 0.23	1.11 0.30	76.38 48.57
14	4	Summitcrest Complete 1P55 MGR Blackbird 8055	14850409 16058920	G A R Predestined EXAR Blackbird 5005	Sires EPDs Dams EPDs	2.6 2.8	55 55	30 30	101 98	0.62 1.06	1.11 0.93	76.38 77.88
15A	3	Summitcrest Complete 1P55 BR Royal Lass 7036-19	14850409 13253905	S A F Neutron S A F Royal Lass 7036	Sires EPDs Dams EPDs	2.6 1.9	55 56	30 22	101 82	0.62 0.55	1.11 0.26	76.38 45.13
15B	4	Summitcrest Complete 1P55 BR Royal Lass 7036-19	14850409 13253905	S A F Neutron S A F Royal Lass 7036	Sires EPDs Dams EPDs	2.6 1.9	55 56	30 22	101 82	0.62 0.55	1.11 0.26	76.38 45.13
16	5	G A R Predestined CMC 0887 Blackcap 6125	13395344 15426280	Whitestone Precision H141 EXAR Blackcap 0887	Sires EPDs Dams EPDs	4.0 1.7	52 39	29 22	97 81	1.24 0.38	0.63 0.80	73.40 60.94



Sire of Lot 17



Maternal Grandam of Lot 17



Sire of Lots 18 & 19



Sister to Dam of Lot 20

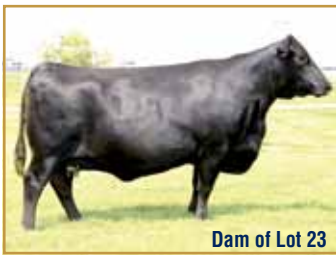
Lot #	Eggs	Sire Name Dam Name	Sire Reg Dam Reg	MGS Name MGD Name	EPDs	BW	WW	YW	Milk	Marb	REA	\$B
17	2	Connealy Final Product EXAR Rita 81005	15848422 15934942	Stevenson Moneymaker R185 G A R Grid Maker 312	Sires EPDs Dams EPDs	-0.9 5.1	67 59	22 12	115 104	0.23 0.41	0.58 0.37	53.95 55.87
18	4	Rito 6EM3 of 4L1 Emblazon EXAR Erica 7073	15266350 15670185	Bon View New Design 1407 EXAR Erica 3636	Sires EPDs Dams EPDs	-0.3 1.7	58 43	19 26	102 87	0.16 0.74	0.71 0.56	38.91 62.00
19	4	Rito 6EM3 of 4L1 Emblazon Monarch Miss Blackfoot T275	15266350 15880728	EXAR New Look 2971 Pine Coulee Blackfoot R38	Sires EPDs Dams EPDs	-0.3 2.9	58 45	19 18	102 83	0.16 0.52	0.71 0.63	38.91 59.82
20	4	Hoover Dam Basin Lucy 514N	16124994 14401032	Bon View New Design 1407 Basin Lucy 178E	Sires EPDs Dams EPDs	-0.1 0.3	48 48	40 29	98 102	0.56 0.50	0.99 0.12	66.46 55.24



Sire of Lots 20, 21 & 22



Dam of Lot 22



Dam of Lot 23



Grandam of Lot 24

Lot #	Eggs	Sire Name Dam Name	Sire Reg Dam Reg	MGS Name MGD Name	EPDs	BW	WW	YW	Milk	Marb	REA	\$B
21	4	Hoover Dam TF Miss Blackcap 8717	16124994 16094014	D H D Traveler 6807 Sterling Blackcap 445	Sires EPDs Dams EPDs	-0.1 1.7	48 34	40 18	98 72	0.56 0.39	0.99 0.49	66.46 51.42
22	4	Hoover Dam Riverbend Blackcap R265	16124994 14988058	Bon View New Design 1407 Rita 3B8 of 2536 BW	Sires EPDs Dams EPDs	-0.1 1.7	48 53	40 33	98 92	0.56 0.62	0.99 0.47	66.46 52.92
23	4	SQ Credence 67S EXAR Lady 1497	15705880 15622763	Mytty In Focus Stevenson Lady 981R	Sires EPDs Dams EPDs	0.8 0.7	64 52	23 25	104 97	0.83 0.60	0.44 -0.13	55.42 42.87
24	4	SQ Credence 67S PF BLACKCAP 7533 of EXAR	15705880 15984176	S A V Peacemaker 3179 BAAR USA Ext 3104	Sires EPDs Dams EPDs	0.8 2.8	64 49	23 27	104 82	0.83 0.29	0.44 0.19	55.42 43.74



Sire of Lots 25 & 26



Grandam of Lots 26, 29 & 30



Dam of Lot 27

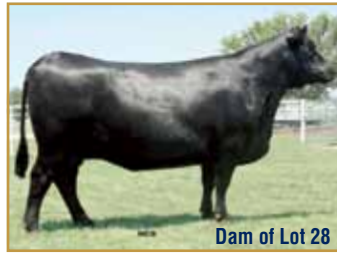


Grandam of Lot 27

Lot #	Eggs	Sire Name Dam Name	Sire Reg Dam Reg	MGS Name MGD Name	EPDs	BW	WW	YW	Milk	Marb	REA	\$B
25	5	BC 7022 Raven 7965	15034593	B/R New Frontier 095	Sires EPDs	3.3	45	12	81	0.26	0.80	56.49
		Sandpoint Blackcap 2071	14182592	EXAR Blackcap 7698	Dams EPDs	3.0	40	26	69	0.29	0.44	50.75
26	4	BC 7022 Raven 7965	15034593	Summitcrest High Prime 0H29	Sires EPDs	3.3	45	12	81	0.26	0.80	56.49
		EXAR New Design 4330	14974707	G A R New Design 1200	Dams EPDs	1.9	46	32	74	0.80	0.62	63.99
27	4	G A R Ultimate	15464043	EXAR 263C	Sires EPDs	2.1	61	26	101	0.85	0.60	68.54
		EXAR Blackcap 7058	15670180	EXAR Blackcap 2851	Dams EPDs	1.0	54	24	100	0.64	0.58	67.96



Sire of Lots 28 & 29



Dam of Lot 28



Dam of Lots 29 & 30



Sister of Lots 29 & 30

Lot #	Eggs	Sire Name Dam Name	Sire Reg Dam Reg	MGS Name MGD Name	EPDs	BW	WW	YW	Milk	Marb	REA	\$B
28	4	EXAR Unstoppable 8011	15934916	B/R New Design 036	Sires EPDs	2.6	56	27	111	0.56	0.45	65.37
		G A R New Design 6231	14011413	G A R Precision 1928	Dams EPDs	2.5	38	25	70	0.80	0.07	60.78
29	4	EXAR Unstoppable 8011	15934916	RAB-GAR Load Up 4049J	Sires EPDs	2.6	56	27	111	0.56	0.45	65.37
		G A R Load Up 1682	14225260	G A R New Design 1200	Dams EPDs	2.2	48	24	88	0.64	0.55	62.16
30	4	RR Cork Predestined 5042	15248684	RAB-GAR Load Up 4049J	Sires EPDs	2.6	63	22	108	0.85	0.71	71.92
		G A R Load Up 1682	14225260	G A R New Design 1200	Dams EPDs	2.2	48	24	88	0.64	0.55	62.16



Sire of Lot 31



Dam of Lots 31



Sire of Lot 33



Dam of Lot 75

Lot #	Eggs	Sire Name Dam Name	Sire Reg Dam Reg	MGS Name MGD Name	EPDs	BW	WW	YW	Milk	Marb	REA	\$B
31	4	Gardens Prime Star	14740749	EXAR New Look 2971	Sires EPDs	2.2	41	17	84	1.28	0.37	53.75
		EXAR Miss EXT 4879	14819714	G A R Ext 1206	Dams EPDs	3.1	40	20	81	0.48	0.30	56.12
32	4	Woodhill Foresight	13936986	BR Midland	Sires EPDs	3.8	61	26	106	0.54	0.62	69.57
		EXAR Miss Barbara 5940	15089581	Southern Miss Barbara 2710	Dams EPDs	3.8	40	10	79	0.44	0.13	47.40
33	4	SydGen Sure Bet	15915113	EXAR New Look 2971	Sires EPDs	2.8	57	26	99	0.94	0.53	60.87
		EXAR Forever Lady 5563	14912430	Maple Lane Forever lady 9280	Dams EPDs	3.1	46	25	93	0.46	0.39	54.25
34	5	Schurrtop MC 2500	14840227	Paramont Ambush 2172	Sires EPDs	5.2	48	27	84	-0.06	0.09	32.60
		G A R Ambush 75	12548439	G A R 6807 Traveler 673	Dams EPDs	3.1	35	22	64	0.29	0.23	42.86



EXAR Lutton 1831



EXAR Sudden Impact 1537

Lot	# Straws	Name	Reg	BW	WW	YW	Milk	Marb	REA	\$B
35A	3	EXAR Lutton 1831	14035047	2.6	65	31	115	0.35	0.01	60.55
35B	3	EXAR Lutton 1831	14035047	2.6	65	31	115	0.35	0.01	60.55
36A	3	EXAR Sudden Impact 153	13806056	2.1	57	31	103	0.21	0.20	55.30
36B	3	EXAR Sudden Impact 1537	13806056	2.1	57	31	103	0.21	0.20	55.30

Embryo & Rare Semen Internet Auction

Bidding begins...November 21, 2011 at Noon CST || Bidding closes...November 22, 2011 at 7 p.m. CST

Bid at... LiveAuctions.TV

...Bid price is per embryo. For example if offering 4 embryos or units of semen in a package, the package price is 4X bid price.

...Buyer is responsible for the cost of shipping embryos and/or semen. US Shipping = \$85 or \$165 overnight.



If you have any questions or if we can be of additional service, don't hesitate to contact any Express Ranches staff member.

2202 N. 11th St. | Yukon, OK 73099 | Bob Funk, Owner | Jarold Callahan, President
800-664-3977 | 405-350-0044 | www.expressranches.com | squires@expressranches.com