



The **Big** *at Express*
Ranches
Event

FRIDAY, AUGUST 23, 2013

1:30 p.m. Express-Superior Sale on RFDTV
6:00 p.m. Presale Gala - Home of Bob Funk
7:00 p.m. Gala - Country Music Spectacular

SATURDAY, AUGUST 24, 2013

7:30 a.m. Coffee, Juice and Pastries
11:00 a.m. Big Event Sale - Live at Express Ranches &
www.superiorlive.com & www.liveauctions.tv

SALE-DAY SUPPLEMENT

A Banner Year for EX Juniors!



1. EXAR ENVIOUS BLACKBIRD 2611

Grand Champion Owned Heifer, 2013 NJAS
Rs. Champion, 2013 WNAF Rov Show
Grand Champion, 2013 Dixie National ROV
Grand Champion, 2013 FWSS ROV
Sydney Schnoor

2. EXAR ENVIOUS BLACKBIRD 1760

Grand Champion, 2013 NWSS ROV
Rs. Champion Owned Female, 2013 NWSS Jr.
Grand Champion, 2012 NAILE ROV
Rs. Champion, 2012 NAILE Jr Angus Show
Grand Champion, 2012 NILE ROV Show
Grand Champion Owned Female, 2012 NILE Jr.
2012-2013 Show Heifer of the Year
Ashley Cox

3. EXAR PRINCESS 5391

Grand Champion, 2013 WNAF ROV Show
Grand Champion, 2012 Illinois State Fair
Trent Ray

4. EXAR WINNIE 5291

Owned Heifer Rs. Early Senior Champion
2013 NJAS
Sydney Schnoor

5. EXAR ENVIOUS BLACKBIRD 2613

Owned Heifer Rs. Jr Ch. Div 5, 2013 NJAS
Rs. Champion, 2013 Star of Texas Fair
Calli West

6. EXAR PRINCESS 5662

Owned Heifer Class 10, 2013 NJAS
Charley Johnson

7. EXAR FOREVER LADY 2867

Owned Heifer Calf Champion Div. 3, 2013 NJAS
Sydney Schnoor



8. EXAR FRONTIER GAL 1405

Grand Champion, 2013 WNAF Jr Show
Trent Ray

9. EXAR FOREVER LADY 5431

Owned Heifer Class 57, 2013 NJAS
Katlyn Tunstill

10. EXAR PRINCESS 6552

Owned Heifer Class 26, 2013 NJAS
Rs. Supreme Heifer, 2013 OYE
Karisa Pfeiffer

LOT	UPDATE INFORMATION	LOT	UPDATE INFORMATION
1A	Sells with bull calf Lot 1AA - EXAR Hoover Dam 3067B. Born 1/12/13	53	Out of Sale
1B	Sells with Heifer calf Lot 1BB - EXAR EXAR Empress 3184. Born 3/05/13	57	Out of Sale
3A	Out of Sale	63	Out of Sale
3B	Out of Sale	81	Out of Sale
4	Flushed at Express 1-time for 13 high-quality Embryos.	138	Out of Sale
6A	Out of Sale	228A	Bred to EXAR Upward 0846. Due 3/30/2014. Checked Safe.
10B	Out of Sale	240A	Bred to EXAR Denver 2002B. Due 4/12/2014. Checked Safe.
29	Bred to Top Game 561X. Due 4/20/2013	300	Bred to CoX Complete X09. Due September.
31	Sells Open	342	Out of Sale
36	Bred to Top Game 561X. Due 4/23/2013	373	Out of Sale
43	AI'd to AAR Ten X 7008 on 08/14/2013	394	Out of Sale
49	Out of Sale	438	Out of Sale
		444	Out of Sale

LOT	UPDATE ADJ. WEANING WEIGHT INFORMATION	LOT	UPDATE ADJ. WEANING WEIGHT INFORMATION
200	Adj. WW: 755	221	Adj. WW: 743
201	Adj. WW: 648	222	Adj. WW: 782
202	Adj. WW: 748	223	Adj. WW: 705
203	Adj. WW: 610	224	Adj. WW: 649
204	Adj. WW: 757	225	Adj. WW: 636
205	Adj. WW: 755	226	Adj. WW: 691
206	Adj. WW: 726	227	Adj. WW: 662
207	Adj. WW: 772	228	Adj. WW: 721
208	Adj. WW: 740	229	Adj. WW: 635
209	Adj. WW: 738	230	Adj. WW: 736
210	Adj. WW: 722	231	Adj. WW: 772
211	Adj. WW: 733	232	Adj. WW: 744
212	Adj. WW: 654	233	Adj. WW: 732
213	Adj. WW: 747	234	Adj. WW: 717
214	Adj. WW: 637	235	Adj. WW: 761
215	Adj. WW: 710	236	Adj. WW: 676
216	Adj. WW: 766	237	Adj. WW: 714
217	Adj. WW: 722	238	Adj. WW: 654
218	Adj. WW: 714	239	Adj. WW: 691
219	Adj. WW: 629	240	Adj. WW: 692
220	Adj. WW: 674	241	Adj. WW: 646



— Updated Calving Information —

LOT	REG#	TATTOO	BIRTH DATE	SEX	SIRE'S NAME	BW	CED	BW	WW	MILK	YW	CW	MARB	REA	\$B
5A	17560492	3463	7/13/13	C	A A R Ten X 7008 S A	60	6	0.7	66	29	127	45	0.97	1.00	107.82
7A	17564152	9073B	7/23/13	B	EXAR Grit 1025B	62	6	2.4	66	34	120	41	0.58	0.83	92.28
8A	17568223	9363B	8/2/13	B	A A R Ten X 7008 S A	84	7	2.0	64	31	124	53	1.23	0.74	108.98
9A	17575892	9523B	8/11/13	B	A A R Ten X 7008 S A	78	5	1.8	60	30	116	46	0.91	0.81	100.77
16AA	17571152	9423B	8/6/13	B	A A R Ten X 7008 S A	80	8	1.1	61	34	118	47	0.98	0.85	106.31
16BB	Pending	9703B	8/21/13	B	EXAR Cosensus 1385B	80	5	2.3	62	28	109	42	0.68	0.62	85.50
21A	17564147	3489	7/28/13	C	EXAR Upshot 0562B	82	4	3.5	59	25	109	60	0.59	0.87	97.18
45A	17564157	9153B	7/26/13	B	EXAR Upshot 0562B	70	7	1.5	56	30	107	50	0.61	0.68	94.08
46A	17564444	9043B	7/23/13	B	Rito 9M25 of Rita 5F56 Pred	66	12	1.6	55	26	96	48	1.01	0.98	102.42
47A	17564139	3478	7/23/13	C	EXAR Upshot 0562B	64	8	1.7	63	30	115	56	0.66	0.77	96.55
48AA	17564441	9104B	7/24/13	B	Rito 9M25 of Rita 5F56 Pred	72	9	2.2	64	28	107	46	1.03	0.77	99.08
48BB	17569267	9073	8/4/13	C	Rito 9M25 of Rita 5F56 Pred	80	11	1.7	62	28	104	45	1.06	0.82	100.73
50A	17565210	3483	7/26/13	C	A A R Ten X 7008 S A	72	6	1.9	63	26	120	45	0.99	0.64	101.43
51A	17564160	9193B	7/28/13	B	EXAR Upshot 0562B	82	8	1.2	51	24	96	48	0.59	0.66	89.35
52A	17564143	3482	7/26/13	C	EXAR Upshot 0562B	70	7	2.1	59	24	107	49	0.73	0.76	95.55
54A	17564155	9133B	7/25/13	B	EXAR Upshot 0562B	70	8	2.0	56	27	105	47	0.72	0.75	96.21
55A	17575890	9223	8/15/13	C	A A R Ten X 7008 S A	62	7	1.0	59	28	115	45	0.82	0.82	99.53
56A	17560511	3499B	7/22/13	B	EXAR Upshot 0562B	70	6	2.2	58	25	111	54	0.67	0.94	99.80
59A	17560496	3467	7/17/13	C	EXAR Upshot 0562B	68	5	2.7	61	25	113	55	0.72	0.85	100.98
60A	17568218	9273B	8/1/13	B	EXAR Upshot 0562B	72	4	3.1	61	21	114	46	0.65	0.77	94.82
61A	17561996	3488B	7/18/13	B	EXAR Declaration 1686B	68	5	2.3	55	29	104	31	0.30	0.72	71.55
62A	17564140	3479	7/24/13	C	Connealy Consensus 7229	66	8	0.9	58	22	104	31	0.83	0.76	87.69
64A	17560499	3471	7/21/13	C	Connealy Consensus 7229	68	8	0.8	57	24	100	42	0.69	0.96	93.85
65A	17565207	3488	7/28/13	C	A A R Ten X 7008 S A	78	8	1.0	53	32	104	36	0.78	0.82	94.54
66A	17560493	3464	7/15/13	C	EXAR Upshot 0562B	64	8	0.9	58	33	113	52	0.65	0.82	98.54
67A	17568225	9383B	8/2/13	B	EXAR Upshot 0562B	76	8	1.8	57	38	112	51	0.62	0.80	96.53
68A	17561169	3490B	7/18/13	B	A A R Ten X 7008 S A	80	9	1.1	56	29	112	28	0.80	0.64	83.57
69A	17564150	3494	7/29/13	C	EXAR 263C	72	7	1.1	52	31	99	18	0.62	0.83	70.99
70A	17561995	3470	7/21/13	C	EXAR Declaration 1686B	70	6	2.9	57	23	105	37	0.31	0.70	75.90
71A	17560501	3487B	7/17/13	B	A A R Ten X 7008 S A	64	9	0.9	59	32	116	40	0.83	0.86	100.13
72A	17565200	9203B	7/28/13	B	A A R Ten X 7008 S A	70	11	0.1	58	29	113	40	1.04	0.55	97.12
74A	17571157	9483B	8/9/13	B	Connealy Consensus 7229	78	8	0.8	52	16	92	32	0.81	0.64	86.18
76A	17568216	9063	8/4/13	C	Connealy Consensus 7229	82	6	1.0	59	21	106	40	0.63	0.64	86.40
77A	17568213	9033	8/3/13	C	Connealy Consensus 7229	82	4	2.3	60	21	105	35	0.66	0.54	83.64
78A	17568217	9083	8/5/13	C	Connealy Consensus 7229	80	5	1.6	59	23	102	31	0.66	0.67	83.24
79A	17568220	9293B	8/1/13	B	EXAR Upshot 0562B	80	1	3.1	55	30	109	52	0.77	0.79	97.60

— Updated Calving Information —

LOT	REG#	TATTOO	BIRTH DATE	SEX	SIRE'S NAME	BW	CED	BW	WW	MILK	YW	CW	MARB	REA	\$B
84A	17568226	9393B	8/3/13	B	EXAR Upshot 0562B	86	2	3.6	65	32	124	52	0.67	0.90	99.68
116A	17571150	9143	8/8/13	C	Dameron First Impression	82	8	1.9	56	28	96	21	0.17	0.55	55.88
301A	17560503	3491B	7/18/13	B	Connealy Consensus 7229	78	5	2.3	67	21	111	45	0.63	0.59	89.71
302A	17571156	9463B	8/8/13	B	EXAR Unstoppable 8011	78	3	2.6	57	30	109				
307A	17571153	9433B	8/6/13	B	EXAR Upshot 0562B	88	5	2.7	58	30	110	45	0.57	0.54	86.51
308A	17565230	9263B	7/29/13	B	A A R Ten X 7008 S A	82	6	1.4	57	33	114	37	0.97	0.95	100.80
310A	17568228	9413B	8/5/13	B	Dameron First Impression	88									
311A	17568214	9043	8/4/13	C	Baldrige Waylon W34	80	10	1.8	62	22	107	35	0.64	0.70	86.73
315A	17568221	9303B	8/1/13	B	EXAR Upshot 0562B	82	8	2.1	61	30	117	45	0.63	0.65	90.82
316A	17575889	9213	8/15/13	C	A A R Ten X 7008 S A	78	9	0.7	65	30	124	35	0.94	0.72	97.08
317A	17564158	9173B	7/27/13	B	EXAR Upshot 0562B	78	5	2.7	57	29	108	42	0.62	0.79	93.05
319A	17565243	9243B	7/28/13	B	A A R Ten X 7008 S A	84	12	-0.7	54	30	109	27	0.84	0.34	80.37
320A	17568227	9403B	8/3/13	B	Baldrige Waylon W34	84	8	1.5	58	26	102	33	0.76	0.73	89.33
321A	17571146	9103	8/7/13	C	EXAR Grit 1025B	78	9	1.8	60	27	109	33	0.47	0.50	76.77
322A	17576445	9643B	8/16/13	B	EXAR Grit 1025B	76	9	1.9	62	28	111	34	0.5	0.5	79.15
323A	17571154	9443B	8/7/13	B	Connealy Consensus 7229	80	7	2.7	54	16	99	39	0.68	0.63	87.84
324A	17560513	9013B	7/22/13	B	EXAR Upshot 0562B	80									
330A	17571155	9453B	8/8/13	B	EXAR Unstoppable 8011	82	6	1.4	55	26	100	39	0.39	0.65	80.11
331A	17575899	9603B	8/14/13	B	Baldrige Waylon W34	88	6	2.0	63	33	113	40	0.85	0.81	96.68
333A	17571159	9503B	8/10/13	B	Basin HD 122X	80	8	0.1	52	28	96				
335A	17571151	9153	8/9/13	C	Dameron First Impression	78	10	0.4	48	23	83	22	0.23	0.52	56.89
336A	17564163	9253B	7/28/13	B	Dameron First Impression	80	9	1.4	47	24	81	19	0.19	0.44	52.33
338A	Free Martin	9123	8/7/13	C	EXAR Upshot 0562B	80									
339A	17571149	9133	8/8/13	C	EXAR Grit 1025B	76	7	1.5	56	29	102	42	0.44	0.37	80.98
340A	17568211	9013	8/1/13	C	EXAR Grit 1025B	78	6	2.0	57	30	103	44	0.43	0.35	82.33
346A	17560504	3492B	7/18/13	B	Dameron First Impression	82	11	0.5	48	23	81				
350A	17564156	9143B	7/25/13	B	Dameron First Impression	80	9	1.4	51	24	87				
351A	17560500	3486B	7/15/13	B	Connealy Consensus 7229	70	3	3.1	60	21	99	36	0.83	0.81	91.51
351B	Free Martin	C905-FM	7/15/13	C	Connealy Consensus 7229										
353A	17565219	9093B	7/23/13	B	A A R Ten X 7008 S A	78	6	0.9	55	30	113	50	1.04	0.67	101.37
356A	17565218	3472	7/23/13	C	A A R Ten X 7008 S A	74	10	-0.7	55	27	109				
360A	17560508	3496B	7/21/13	B	EXAR Upshot 0562B	82	4	2.5	56	27	106	50	0.59	0.92	92.21
368A	17576443	9623B	8/16/13	B	EXAR Unstoppable 8011	80	2	3	56	32	107	37	0.62	0.51	82.58
369A	17560507	3495B	7/21/13	B	Connealy Consensus 7229	80	8	1.8	53	16	94	32	0.91	0.54	84.72
370A	17564153	9083B	7/23/13	B	Connealy Consensus 7229	78	8	2.1	52	16	92	30	1.03	0.54	84.55
371A	17568208	3498	7/29/13	C	EXAR 263C	80	7	2.0	48	25	97	26	0.53	0.59	73.73

— Updated Calving Information —

LOT	REG#	TATTOO	BIRTH DATE	SEX	SIRE'S NAME	BW	CED	BW	WW	MILK	YW	CW	MARB	REA	\$B
375A	17564144	3484	7/26/13	C	Dameron First Impression	84	6	2.1	47	22	85	25	0.26	0.41	62.25
376A	17575891	9513B	8/10/13	B	A A R Ten X 7008 S A	76	6	2.2	53	22	104	37	0.75	0.67	92.88
378A	17564142	3481	7/24/13	C	Dameron First Impression	78	6	1.9	49	23	90	26	0.39	0.51	68.42
380A	Pending	9273	8/20/13	C	A A R Ten X 7008 S A	80	6	2	59	25	113	43	0.82	0.63	94.61
381A	17575900	9613B	8/15/13	B	EXAR Unstoppable 8011	82	-1	3.6	48	17	96	33	0.55	0.51	78.85
383A	17571145	9093	8/6/13	C	A A R Ten X 7008 S A	84	5	2.2	61	33	115	48	0.87	0.71	101.40
384A	17575893	9533B	8/12/13	B	EXAR Grit 1025B	80	6	1.4	56	25	108	36	0.58	0.43	81.92
388A	17576643	9693B	8/20/13	B	EXAR Grit 1025B	84	6	1.2	57	23	109	34	0.44	0.37	76.89
389A	17564449	3490	7/28/13	C	Rito 9M25 of Rita 5F56 Pred	80	13	1.4	49	31	90	35	1.27	0.64	91.49
390A	17560502	3489B	7/18/13	B	Connealy Consensus 7229	70	7	1.7	56	20	97				
393A	17576447	9663B	8/17/13	B	Connealy Consensus 7229	90	9	1.5	59	22	103	38	0.69	0.8	90.42
396A	17571158	9493B	8/9/13	B	Basin HD 122X	82	6	0.7	50	30	93	16	0.45	0.48	62.40
398A	17575898	9593B	8/14/13	B	Basin HD 122X	78	9	-0.2	54	32	97				
403A	17560491	3462	7/9/13	C	EXAR Upshot 0562B	62	9	1.3	50	28	94	41	0.67	0.54	88.30
404A	Pending	9283	8/20/13	C	EXAR Unstoppable 8011	78	3	2.5	50	28	97	36	0.43	0.39	75.08
405A	17564141	3480	7/24/13	C	EXAR Upshot 0562B	80	5	2.5	56	33	110				
406A	17568209	3499	8/1/13	C	Connealy Consensus 7229	70	8	1.9	53	21	93	34	0.81	0.63	85.63
408A	17575894	9553B	8/10/13	B	EXAR Grit 1025B	56	5	2.3	59	28	109	37	0.43	0.27	77.84
408B	17575886	9183	8/10/13	C	EXAR Grit 1025B	56	5	2.3	59	28	109	37	0.43	0.27	77.84
408C	17575887	9193	8/10/13	C	EXAR Grit 1025B	56	5	2.3	59	28	109	37	0.43	0.27	77.84
413A	17571147	9113	8/7/13	C	EXAR Grit 1025B	76	6	2.4	61	27	116	33	0.48	0.40	76.71
415A	17560514	9023B	7/22/13	B	Connealy Consensus 7229	82	8	2.1	52	17	91	29	0.75	0.49	80.63
416A	17576444	9633B	8/16/13	B	Connealy Consensus 7229	74	4	2.1	55	23	96	31	0.7	0.59	81.84
417A	17560494	3465	7/16/13	C	Connealy Consensus 7229	70	7	1.6	54	17	93				
418A	17568219	9283B	8/1/13	B	Basin HD 122X	78									
420A	17575897	9583B	8/14/13	B	EXAR Unstoppable 8011	82	3	2.4	54	22	100				
422A	17576446	9653B	8/17/13	B	A A R Ten X 7008 S A	78	4	3	56	30	112				
431A	17565212	9033B	7/21/13	B	A A R Ten X 7008 S A	70	10	-0.3	51	29	107	42	0.90	0.69	97.81
433A	17575884	9163	8/12/13	C	EXAR Unstoppable 8011	76	2	2.9	48	23	95				
446A	17565216	9103B	7/23/13	B	A A R Ten X 7008 S A	74	7	1.8	54	25	109	37	0.95	0.53	94.56
447A	17575888	9203	8/14/13	C	A A R Ten X 7008 S A	80	10	1.3	54	25	108	38	1.00	0.54	95.54



— Friday - DD Test Results —

LOT	RESULTS	LOT	RESULTS	LOT	RESULTS	LOT	RESULTS	LOT	RESULTS	LOT	RESULTS	LOT	RESULTS	LOT	RESULTS
300	DDF	317	DDF	334	DDF	352	DDC	371	DDF	390A	DDF	411	DDF	431	DDF
301	DDF	317A	DDF	335	DDF	353	DDC	371A	DDF	391	DDF	412	DDF	431A	DDF
301A	DDF	318	DDF	335A	DDF	353A	DDC	372	DDF	392	DDF	413	DDF	432	DDF
302	DDF	319	DDF	336	DDF	354	DDC	374	DDF	393	DDF	413A	DDF	433	DDF
302A	DDF	319A	DDF	336A	DDF	355	DDF	375	DDF	395	DDF	414	DDF	434	DDF
303	DDF	320	DDF	337	DDF	356	DDF	375A	DDF	396	DDF	415	DDF	435	DDF
304	DDF	320A	DDF	338	DDF	356A	DDF	376	DDF	396A	DDF	415A	DDF	436	DDF
305	DDF	321	DDF	338A	DDF	357	DDF	377	DDF	397	DDF	416	DDF	437	DDF
306	DDF	321A	DDF	339	DDF	358	DDF	378	DDF	398	DDF	417	DDC	439	DDF
307	DDF	322	DDF	340	DDF	359	DDF	378A	DDF	399	DDF	417A	DDF	440	DDF
307A	DDF	323	DDF	340A	DDF	360	DDF	379	DDF	400	DDF	418	DDF	441	DDC
308	DDC	323A	DDF	341	DDF	360A	DDF	380	DDF	401	DDF	418A	DDF	442	DDF
308A	DDF	324	DDF	343	DDF	361	DDF	381	DDF	402	DDC	419	DDF	443	DDF
309	DDC	324A	DDF	344	DDF	362	DDF	382	DDF	403	DDF	420	DDF	444	DDF
310	DDF	325	DDF	345	DDF	363	DDF	383	DDF	403A	DDF	421	DDF	445	DDF
310A	DDF	326	DDF	346	DDF	364	DDC	383A	DDF	404	DDF	422	DDF	446	DDF
311	DDF	327	DDF	346A	DDF	365	DDF	384	DDC	405	DDF	423	DDF	446A	DDF
311A	DDF	328	DDF	347	DDF	366	DDC	385	DDF	405A	DDF	424	DDF	447	DDF
312	DDF	329	DDF	348	DDF	367	DDF	386	DDF	406	DDC	425	DDF		
313	DDF	330	DDF	349	DDF	368	DDF	387	DDF	406A	DDC	426	DDC		
314	DDF	330A	DDF	350	DDF	369	DDF	388	DDF	407	DDF	427	DDF		
315	DDF	331	DDF	350A	DDF	369A	DDF	389	DDF	408	DDF	428	DDF		
315A	DDF	332	DDF	351	DDC	370	DDF	389A	DDF	409	DDF	429	DDF		
316	DDF	333	DDF	351A	DDF	370A	DDF	390	DDF	410	DDF	430	DDF		



— Saturday - DD Test Results —

LOT	RESULTS	LOT	RESULTS	LOT	RESULTS	LOT	RESULTS	LOT	RESULTS	LOT	RESULTS	LOT	RESULTS	LOT	RESULTS
1A	DDC	21	DDF	48AA	DDC	72A	DDF	112	DDF	152A	DDF	204A	DDF	225	DDF
1AA	DDF	21B	DDF	48B	DDC	73	DDF	113	DDF	152B	DDF	205	DDF	225A	DDF
1B	DDF	21A	DDF	48BB	DDF	73B	DDF	114	DDF	152C	DDF	205A	DDF	226	DDF
1BB	DDF	22A	DDF	50	DDF	73C	DDF	115	DDF	153A	DDF	206	DDF	226A	DDF
3	DDC	22B	DDF	50A	DDF	74	DDF	116	DDF	153B	DDF	206A	DDF	227	DDF
4	DDC	23A	DDC	51	DDF	74A	DDF	116A	DDF	154A	DDF	207	DDF	227A	DDF
5	DDF	23B	DDC	51A	DDF	75	DDF	117	DDF	154B	DDF	207A	DDF	228	DDF
5A	DDF	24A	DDC	52	DDF	75B	DDF	118	DDF	155A	DDC	208	DDF	228A	DDF
6	DDF	24B	DDC	52A	DDF	76	DDF	119	DDF	155B	DDF	208A	DDF	229	DDF
7	DDF	25A	DDF	54	DDF	76A	DDF	120	DDF	156A	DDF	209	DDF	229A	DDF
7B	DDF	25B	DDC	54A	DDF	77	DDF	121	DDF	156B	DDF	209A	DDF	230	DDF
7C	DDF	26A	DDC	55	DDF	77A	DDF	122	DDF	156C	DDF	210	DDF	230A	DDF
7A	DDF	26B	DDC	56	DDF	78	DDC	123	DDF	156D	DDF	210A	DDF	231	DDF
8	DDF	27A	DDF	56A	DDF	78B	DDF	124	DDF	157A	DDF	211	DDF	231A	DDF
8B	DDF	27B	DDF	58	DDF	78C	DDF	125	DDF	157B	DDF	211A	DDF	232	DDF
8C	DDF	28A	DDF	59	DDF	78A	DDC	126	DDF	157C	DDF	212	DDF	232A	DDF
8D	DDF	28B	DDC	59A	DDF	79	DDC	127	DDF	158A	DDF	212A	DDF	233	DDF
8A	DDF	28C	DDC	60	DDF	79B	DDF	128	DDF	158B	DDF	213	DDF	233A	DDF
9	DDF	29	DDF	60A	DDF	79C	DDC	129	DDF	159	DDC	213A	DDF	234	DDF
10A	DDF	30	DDF	61	DDF	79D	DDF	130	DDF	160	DDF	214	DDF	234A	DDF
11A	DDF	31	DDF	61A	DDF	79A	DDF	131	DDF	161	DDF	214A	DDF	235	DDF
11B	DDF	32	DDF	62	DDF	80	DDC	132	DDF	162	DDF	215	DDF	235A	DDF
11C	DDF	33	DDF	62A	DDF	81	DDC	133	DDF	163	DDF	215A	DDF	236	DDF
11D	DDF	34	DDF	63	DDC	81A	DDF	134	DDF	164	DDF	216	DDF	236A	DDF
12A	DDF	35	DDF	64	DDF	82	DDF	135	DDF	165	DDF	216A	DDF	237	DDF
12B	DDF	36	DDF	64A	DDF	82B	DDF	136	DDF	166	DDF	217	DDF	237A	DDF
12C	DDF	37	DDF	65	DDF	83	DDF	137	DDF	167	DDF	217A	DDF	238	DDF
13A	DDF	38	DDF	65A	DDF	84	DDF	138	DDF	168	DDF	218	DDF	238A	DDF
14	DDF	39	DDF	66	DDF	84A	DDF	139	DDF	169	DDF	218A	DDF	239	DDF
15A	DDF	40	DDF	66A	DDF	100	DDF	140	DDF	170	DDF	219	DDF	239A	DDF
15B	DDF	41	DDF	67	DDF	101	DDF	141	DDF	171	DDF	219A	DDF	240	DDF
16A	DDF	42	DDF	67A	DDF	102	DDF	150A	DDF	172	DDC	220	DDF	240A	DDF
16AA	DDF	43	DDF	68	DDF	103	DDF	150B	DDF	200	DDF	220A	DDF	241	DDF
16B	DDF	44	DDF	68A	DDF	104	DDF	150C	DDF	200A	DDF	221	DDF	241A	DDF
17A	DDF	45	DDF	69	DDF	105	DDF	150D	DDF	201	DDF	221A	DDF		
18	DDF	45A	DDF	69A	DDF	106	DDF	150E	DDF	201A	DDF	222	DDF		
18A	DDF	46	DDF	70	DDF	107	DDF	151A	DDF	202	DDF	222A	DDF		
18B	DDC	46A	DDF	70A	DDF	108	DDF	151B	DDC	202A	DDF	223	DDF		
19A	DDC	47	DDF	71	DDF	109	DDF	151C	DDF	203	DDF	223A	DDF		
19B	DDF	47A	DDF	71A	DDF	110	DDF	151D	DDF	203A	DDF	224	DDF		
20	DDF	48A	DDC	72	DDF	111	DDF	151E	DDF	204	DDF	224A	DDF		

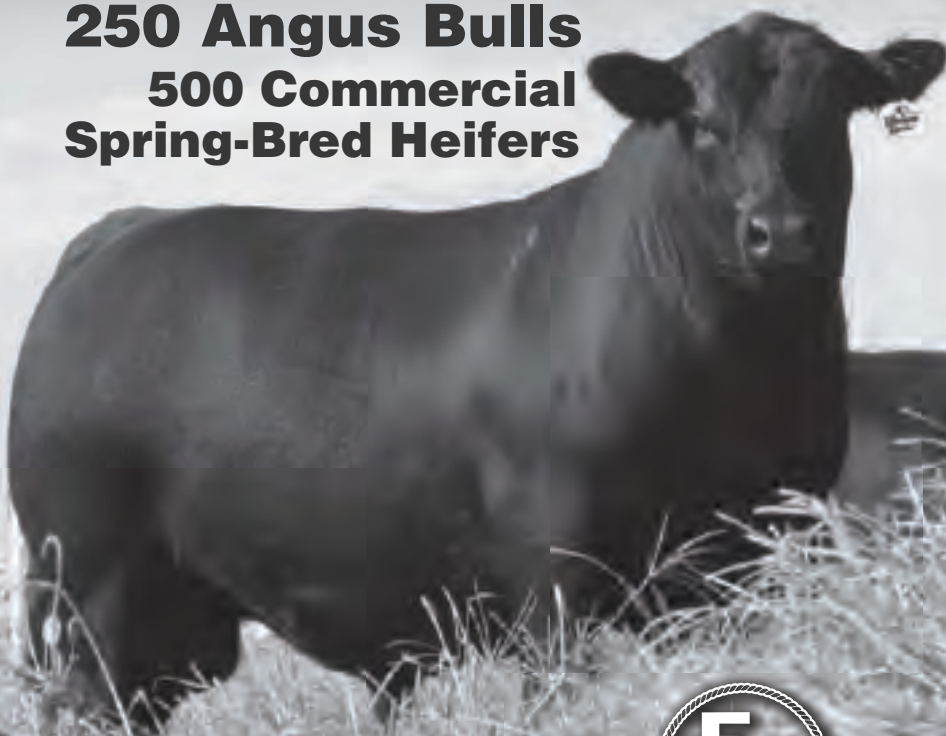


Express Ranches Rancher's Bull Sale

Monday - October 7, 2013 - Noon
At The Ranch - Yukon, Oklahoma

250 Angus Bulls
500 Commercial
Spring-Bred Heifers

750+
Head Sell



BROADCAST LIVE on RFD-TV



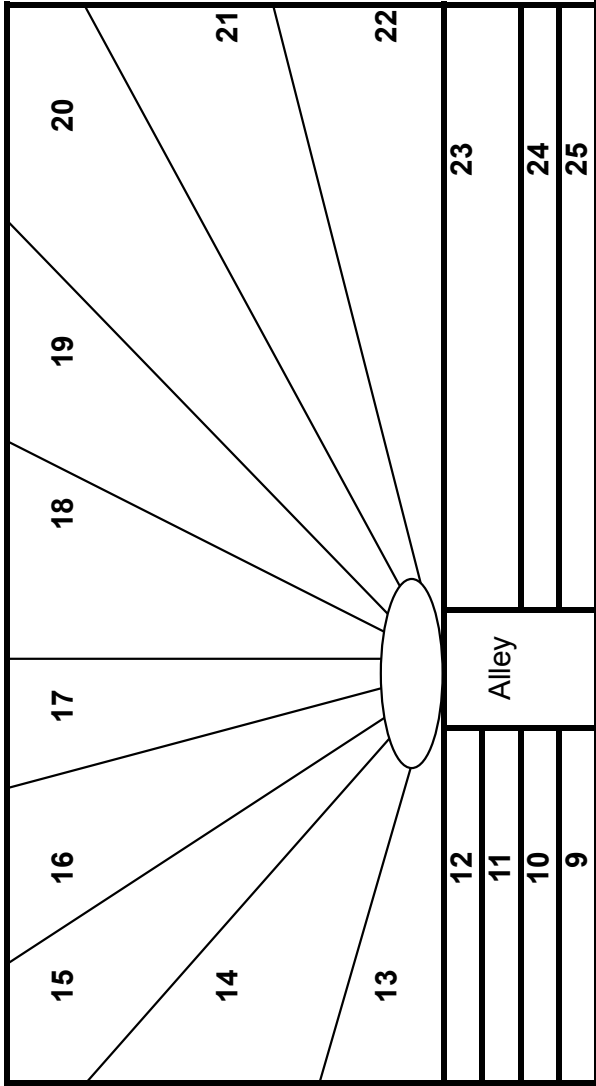
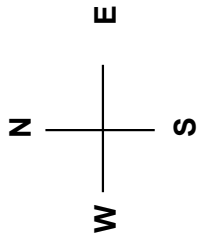
2202 N. 11th St. | Yukon, OK 73099
Bob Funk, Owner | Jarold Callahan, President
800-664-3977 | 405-350-0044
www.expressranches.com

If you have any questions on the cattle selling, don't hesitate to call the Ranch. We are ready to assist you.

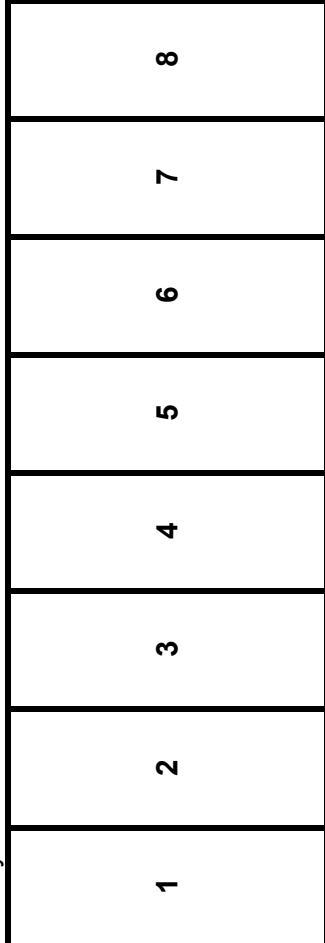
For More Information or a Sale Book, Contact the Ranch.

— 2013 EX Big Event Lot Finder —

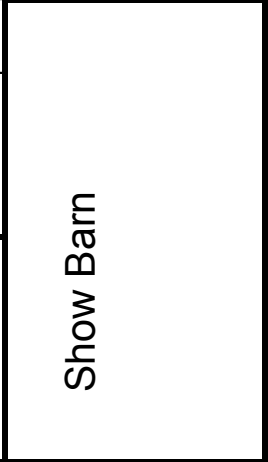
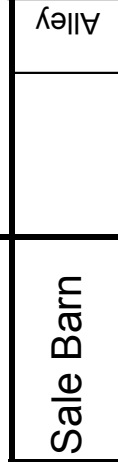
LOT	LOCATION	LOT	LOCATION	LOT	LOCATION	LOT	LOCATION	LOT	LOCATION	LOT	LOCATION	LOT	LOCATION	LOT	LOCATION
1A	Big Tent	30	1	80	7	152B	9	214	16	303	24	362	28	421	32
1B	Big Tent	31	1	81	Out	152C	9	214A	16	304	24	363	28	422	32
2	Big Tent	32	1	82	7	153A	8	215	16	305	24	364	28	423	32
3	Big Tent	33	1	82B	7	153B	8	215A	16	306	24	365	28	424	35
3A	Out	34	1	83	7	154A	8	216	16	307	23	366	28	425	35
3B	Out	35	1	84	7	154B	8	216A	16	308	23	367	28	426	35
4	Big Tent	36	1	100	ShowBarn	155A	8	217	16	309	23	368	28	427	35
5	Big Tent	37	1	101	ShowBarn	155B	8	217A	16	310	23	369	28	428	35
6	Big Tent	38	1	102	ShowBarn	156A	8	218	16	311	22	370	28	429	35
6A	Out	39	1	103	ShowBarn	156B	8	218A	16	312	22	371	28	430	35
7	5	40	1	104	ShowBarn	156C	8	219	16	313	22	372	28	431	35
7B	Big Tent	41	1	105	ShowBarn	156D	8	219A	16	314	22	373	Out	432	35
7C	Big Tent	42	1	106	ShowBarn	157A	10	220	16	315	22	374	28	433	35
8	Big Tent	43	1	107	ShowBarn	157B	10	220A	16	316	22	375	29	434	35
8B	Big Tent	44	2	108	ShowBarn	157C	10	221	17	317	22	376	29	435	35
8C	Big Tent	45	2	109	ShowBarn	158A	10	221A	17	318	22	377	29	436	36
8D	Big Tent	46	2	110	ShowBarn	158B	10	222	17	319	21	378	29	437	36
9	Big Tent	47	2	111	ShowBarn	159	10	222A	17	320	21	379	29	438	Out
10A	Big Tent	48A	5	112	ShowBarn	160	10	223	17	321	21	380	29	439	36
10B	Out	48B	5	113	ShowBarn	161	10	223A	17	322	21	381	29	440	36
11A	Grdn Tent	49	Out	114	ShowBarn	162	Grdn Tent	224	17	323	21	382	29	441	36
11B	Grdn Tent	50	2	115	ShowBarn	163	11	224A	17	324	21	383	29	442	36
11C	Grdn Tent	51	2	116	Big Tent	164	11	225	17	325	21	384	29	443	36
11D	Grdn Tent	52	2	117	ShowBarn	165	11	225A	17	326	21	385	29	444	Out
12A	Grdn Tent	53	Out	118	Big Tent	166	11	226	17	327	20	386	29	445	36
12B	Grdn Tent	54	2	119	ShowBarn	167	12	226A	17	328	20	387	29	446	36
12C	Grdn Tent	55	2	120	ShowBarn	168	12	227	17	329	20	388	30	447	36
13A	Grdn Tent	56	5	121	Big Tent	169	12	227A	17	330	20	389	30		
14	Grdn Tent	57	Out	122	ShowBarn	170	12	228	17	331	20	390	30		
15A	Grdn Tent	58	3	123	ShowBarn	171	12	228A	17	332	20	391	30		
15B	Grdn Tent	59	3	124	ShowBarn	172	12	229	17	333	20	392	30		
16A	Big Tent	60	3	125	ShowBarn	200	15	229A	17	334	20	393	30		
16B	Big Tent	61	3	126	ShowBarn	200A	15	230	17	335	20	394	Out		
17	Big Tent	62	3	127	Big Tent	201	15	230A	17	336	20	395	30		
17A	Grdn Tent	63	Out	128	ShowBarn	201A	15	231	17	337	20	396	30		
18	Grdn Tent	64	3	129	ShowBarn	202	15	231A	17	338	20	397	30		
18A	Grdn Tent	65	3	130	ShowBarn	202A	15	232	18	339	19	398	30		
18B	14	66	3	131	ShowBarn	203	15	232A	18	340	19	399	30		
19A	13	67	3	132	ShowBarn	203A	15	233	18	341	19	400	31		
19B	Grdn Tent	68	5	133	ShowBarn	204	15	233A	18	342	Out	401	31		
20	Big Tent	69	5	134	ShowBarn	204A	15	234	18	343	19	402	31		
21	Big Tent	70	5	135	ShowBarn	205	15	234A	18	344	19	403	31		
21B	Big Tent	71	5	136	ShowBarn	205A	15	235	18	345	19	404	31		
22A	Big Tent	72	5	137	ShowBarn	206	15	235A	18	346	19	405	31		
22B	Big Tent	73	6	138	Out	206A	15	236	18	347	19	406	31		
23A	14	73B	6	139	ShowBarn	207	15	236A	18	348	19	407	31		
23B	14	73C	6	140	ShowBarn	207A	15	237	18	349	19	408	31		
24A	14	74	6	141	ShowBarn	208	15	237A	18	350	19	409	31		
24B	14	75	6	150A	Annex	208A	15	238	18	351	27	410	31		
25A	Grdn Tent	75B	6	150B	Annex	209	15	238A	18	352	27	411	31		
25B	14	76	6	150C	Annex	209A	15	239	18	353	27	412	32		
26A	13	77	6	150D	Annex	210	16	239A	18	354	27	413	32		
26B	13	78	6	150E	Annex	210A	16	240	18	355	27	414	32		
27A	Grdn Tent	78B	6	151A	Annex	211	16	240A	18	356	27	415	32		
27B	Grdn Tent	78C	6	151B	Annex	211A	16	241	18	357	27	416	32		
28A	Grdn Tent	79	7	151C	Annex	212	16	241A	18	358	27	417	32		
28B	13	79B	7	151D	Annex	212A	16	300	25	359	27	418	32		
28C	13	79C	F	151E	Annex	213	16	301	25	360	27	419	32		
29	1	79D	7	152A		213A	16	302	25	361	27	420	32		



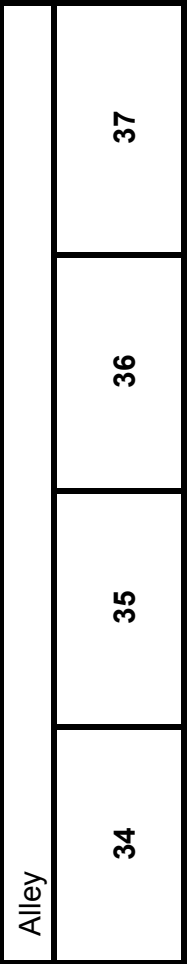
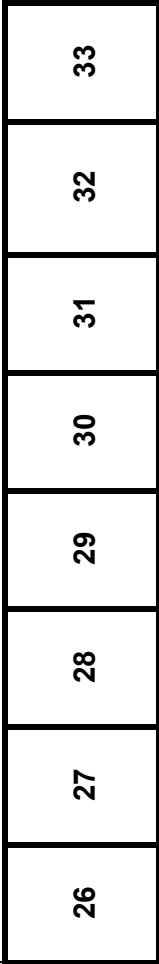
Alley



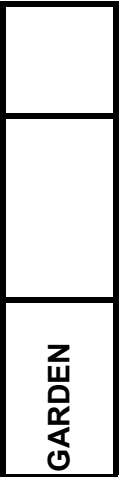
Parking Lot



Alley



Alley



— 2013 EX Big Event Sale Order —

FRI., AUG. 23 at 1:30 P.M. & SAT., AUG. 24 at 11:00 A.M.

Yukon, Oklahoma

FRIDAY SALE ORDER

300 - 447 sell in Lot Order

SATURDAY SALE ORDER

DONORS & ET LOTS	IVF BRED HEIFERS	56	127	154B	<u>OUTS</u>
1A 1B (& Calves)	29 - 36	48A	104	155A	3A
2 - 17	30	48B	107	155B	3B
3	31		108	156A	6A
4	32	<u>DONOR FAMILIES</u>	111	156B	10B
5	33	73	113	156C	49
6	34	73B	114	156D	53
7B	35	73C	117	157A	57
7C	37	74	122	157B	63
8	38	75	124	157C	81
8B	39	75B	125	158A	138
8C	40	76	126	158B	342
8D	41	77	129	159	373
9	42	78	130	160	394
10A	43	78B	131	161	444
11A		78C	132	163	
11B	<u>FALL BRED HEIFER PAIRS</u>	79	133	164	
11C		79B	134	165	
11D	44	79C	136	166	
12A	45	79D	137	167	
12B	46	80	139	168	
12C	47	82	140	169	
13	50	82B	141	170	
162	51	83	105	171	
14	52	84	128	172	
15A	54			18B	
15B	55	<u>SHOW HEIFERS</u>	<u>OPEN HEIFERS</u>	19A	
16A	58	100	150A	23A	
16B	59	106	150B	23B	
17A	60	103	150C	24A	
18	61	110	150D	24B	
18A	62	102	150E	25B	
19B	64	123	151A	26A	
20	65	115	151B	26B	
21	66	101	151C	28B	
21B	67	135	151D	28C	
22A	68	109	151E		
22B	69	116	152A	<u>SPRING PAIRS</u>	
25A	70	121	152B	200 thru 241	
27A	71	119	152C		
27B	72	120	153A		
28A	7	118	153B		
		112	154A		