

Lot No	Update Information
201	AI'ed to EXAR Upshot 0562B on 4/14/2011.
204	AI'ed to EXAR Wanted 9732B on 4/14/2011.
205	AI'ed to EXAR Upshot 0562B on 4/14/2011.
206	AI'ed to Connealy Consensus 7229 on 3/28/2011.
211	AI'ed to EXAR Wanted 9732B on 4/14/2011.
214	AI'ed to Connealy Consensus 7229 on 3/29/2011.
215	AI'ed to EXAR Titlelist T011 on 3/28/2011.
222A	Bull Calf- Exar 263C 230T 1629B sired by Basin 263C 230T born on 4/11/2011. BW: 80 lbs.
223A	Heifer Calf- EXAR Blackcap 1597 sired by EXAR Whistler 9084B born on 4/17/2011. BW: 68 lbs.
224A	Bull Calf- EXAR Ward 1609B sired by EXAR Ward 9115B born on 3/28/2011. BW: 84 lbs.
225A	Bull Calf- EXAR Ward 1621B sired by EXAR Ward 9115B born on 4/3/2011. BW: 90 lbs.
230A	Heifer Calf- EXAR Ever Entense 1368 sired by O S U Total Impact 4112 born on 4/10/2011. BW: 80 lbs.
232A	Bull Calf- EXAR Bismarck 1206B sired by SandPoint Bismarck W376 born on 4/11/2011. BW: 70 lbs.
233A	Heifer Calf- EXAR Blackbird 1592 sired by EXAR Unusual 81100 born on 4/11/2011. BW: 68 lbs.
235A	Bull Calf- EXAR Rito 1208B sired by Spur Rito 616 6435 born on 4/11/2011. BW: 86 lbs.
258A	Heifer Calf- EXAR Susie 1210 sired by WK Network 8279 born on 4/24/2011. BW: 64 lbs.
260A	Bull Calf- EXAR Network 1371B sired by WK Network 8279 born on 4/3/2011. BW: 68 lbs.
261A	Bull Calf- EXAR 263C 8232 1358B sired by RR 263C 8232 born on 3/23/2011. BW: 70 lbs.
271	AI'ed to Connealy Consensus 7229 on 4/15/2011.
272A	Heifer Calf- EXAR Blackcap 1198 sired by EXAR Unstoppable 8011 born on 4/11/2011. BW: 68 lbs.
275A	Heifer Calf- EXAR Blackcap 1580 sired by SandPoint Emblazon 6569 born on 3/26/2011. BW: 74 lbs.
276	AI'ed to Connealy Consensus 7229 on 4/6/2011.
278	AI'ed to Connealy Consensus 7229 on 4/6/2011.
282	AI'ed to Connealy Consensus 7229 on 3/28/2011.
283	AI'ed to EXAR Upshot 0562B on 4/14/2011.
284	AI'ed to Connealy Consensus 7229 on 4/14/2011.
285	AI'ed to EXAR Stoney 0262B on 3/30/2011.
286A	Bull Calf- EXAR Payweight 1363B sired by Basin Payweight 5097 born on 4/1/2011. BW: 82 lbs.
287A	Heifer Calf- EXAR Irene 1204 sired by Basin Payweight 5097 born on 4/18/2011. BW: 70 lbs.
289	AI'ed to EXAR Wanted 9732B on 4/14/2011.
291	AI'ed to Connealy Consensus 7229 on 4/2/2011.
293	AI'ed to Connealy Consensus 7229 on 4/3/2011.
296	AI'ed to EXAR Wanted 9732B on 4/14/2011.
403A	Bull Calf- Black and Polled- EXLR PURE POWER 042Y sired by CARROUSELS PURE POWER born on 4/21/2011. BW: 80 lbs.
412A	Bull Calf- Black and Polled- EXLR Crossroads 027Y sired by DAJS Crossroads 928 born on 4/2/2011. BW: 72 lbs.
416A	Heifer Calf- Black and Polled- EXLR LIM-FLEX 029Y sired by DAJS Crossroads 928 born on 4/15/2011. BW: 70 lbs.
427A	Bull Calf- Black and Polled-EXLR PURE POWER 028Y sired by CARROUSELS PURE POWER born on 4/11/2011. BW: 70 lbs.
430	sells open
467	Added Lot- See Pedigree
Outs	6, 18, 21, 22, 23, 24, 25, 26, 28, 30, 36, 51, 52, 57, 63, 69, 95, 96, 209, 221, 231, 259, 262, 406

— Added Limousin Lot —

467X HFLX LIDIA 9001W

LIM-FLEX COW (25/23) DBL PLD DBL BLK
 8/24/2009 HFLX 9001W LFF1953854

G A R RETAIL PRODUCT GAR PRECISION 1680
 CIRCLE S RETAIL PRODUCT G A R EXT 4927
 CIRCLE S BLACKBIRD 3197 RITO 616 OF 4B20 6807
 CIRCLE S BLACKBIRD 9099
 BC 7022 RAVEN 7965 B C MARATHON 7022
 EXLR LIDIA 7214T O C C BLACKBIRD 796F
 LOGAN'S LIDIA 417L JCL BACK FIRE
 DBDV EMOTIONS 311E

CED	BW	WW	YW	MA	CEM	SC	DOC	CW	RE	YG	MS	SMI
8	-1.9	43	95	25	2	N/A	N/A	33	-.55	.70	.73	64

AI'd 11/1/2010 to EXLR Physique, due 8/11/2011. Checked safe.

Commercial Fall Calving Heifers

Lot No	Est Due Date	Sires
--------	--------------	-------

Roll 1

501 a	9/28/2011	Bred to Express Ranches Low Birth Angus Bulls
501 b	9/18/2011	
501 c	8/13/2011	
501 d	11/28/2011	
501 e	8/11/2011	
502 a	8/11/2011	
502 b	8/29/2011	
502 c	9/19/2011	
502 d	8/11/2011	
502 e	8/11/2011	
502 f	9/8/2011	

Roll 2

503 a	10/19/2011	Bred to Express Ranches Low Birth Angus Bulls
503 b	10/14/2011	
503 c	10/9/2011	
503 d	10/9/2011	
503 e	10/14/2011	
504 a	10/9/2011	
504 b	10/4/2011	
504 c	10/14/2011	
504 d	10/19/2011	
504 e	9/29/2011	
505 a	10/9/2011	
505 b	10/14/2011	
505 c	9/24/2011	
505 d	10/9/2011	
505 e	10/4/2011	
506 a	9/29/2011	
506 b	10/9/2011	
506 c	9/24/2011	
506 d	10/14/2011	
506 e	10/9/2011	
507 a	10/19/2011	
507 b	9/29/2011	
507 c	10/14/2011	
507 d	10/4/2011	
507 e	9/29/2011	

Lot No	Est Due Date	Sires
--------	--------------	-------

Roll 3

508 a	10/9/2011	Bred to Express Ranches Low Birth Angus Bulls
508 b	9/29/2011	
508 c	10/9/2011	
508 d	10/9/2011	
508 e	10/14/2011	
509 a	10/14/2011	
509 b	10/9/2011	
509 c	9/24/2011	
509 d	10/14/2011	
509 e	10/4/2011	
510 a	9/29/2011	
510 b	10/14/2011	
510 c	10/14/2011	
510 d	10/14/2011	
510 e	10/4/2011	
511 a	10/14/2011	
511 b	10/19/2011	
511 c	10/19/2011	
511 d	10/9/2011	
511 e	9/29/2011	
512 a	10/9/2011	
512 b	9/29/2011	
512 c	10/14/2011	
512 d	10/14/2011	
512 e	9/29/2011	

Roll 4

513 a	9/24/2011	Bred to Express Ranches Low Birth Angus Bulls
513 b	10/14/2011	
513 c	10/9/2011	
513 d	10/14/2011	
513 e	10/14/2011	
514 a	9/29/2011	
514 b	10/14/2011	
514 c	9/24/2011	
514 d	9/29/2011	
514 e	9/29/2011	
515 a	9/29/2011	
515 b	10/14/2011	
515 c	10/14/2011	
515 d	10/19/2011	
515 e	10/9/2011	
516 a	10/4/2011	
516 b	10/9/2011	
516 c	10/4/2011	

Lot No	Est Due Date	Sires
--------	--------------	-------

Roll 5

517 a	11/3/2011	Bred to Express Ranches Low Birth Angus Bulls
517 b	10/24/2011	
517 c	11/8/2011	
517 d	10/4/2011	
517 e	11/18/2011	
518 a	11/8/2011	
518 b	11/8/2011	
518 c	10/29/2011	
518 d	10/24/2011	
518 e	10/29/2011	
519 a	11/3/2011	
519 b	10/24/2011	
519 c	11/3/2011	
519 d	11/8/2011	
519 e	11/13/2011	
520 a	11/3/2011	
520 b	11/13/2011	
520 c	11/3/2011	
520 d	11/18/2011	
520 e	10/24/2011	
521 a	11/3/2011	
521 b	10/29/2011	
521 c	11/13/2011	
521 d	10/9/2011	
521 e	11/8/2011	
521 f	10/24/2011	
522 a	11/8/2011	
522 b	10/24/2011	
522 c	11/3/2011	
522 d	10/29/2011	
522 e	10/29/2011	
522 f	10/9/2011	

Commercial Spring Heifers

Lot	Sire ID	AI Date
-----	---------	---------

Roll 6

601 a	6EM3	4/2/2011
601 b	6EM3	3/31/2011
601 c	6EM3	3/29/2011
601 d	6EM3	4/1/2011
601 e	6EM3	3/31/2011
602 a	6EM3	4/14/2011
602 b	6EM3	4/2/2011
602 c	6EM3	3/31/2011
602 d	6EM3	4/14/2011
602 e	6EM3	3/29/2011
603 a	6EM3	4/2/2011
603 b	6EM3	3/29/2011
603 c	6EM3	4/14/2011
603 d	6EM3	4/14/2011
603 e	6EM3	4/14/2011

Roll 7

604 a	6EM3	3/29/2011
604 b	6EM3	3/29/2011
604 c	6EM3	4/2/2011
604 d	6EM3	4/14/2011
604 e	6EM3	4/14/2011
605 a	6EM3	4/14/2011
605 b	6EM3	3/31/2011
605 c	6EM3	3/29/2011
605 d	6EM3	3/31/2011
605 e	6EM3	4/2/2011
606 a	6EM3	4/14/2011
606 b	6EM3	4/14/2011
606 c	6EM3	3/31/2011
606 d	6EM3	3/31/2011
606 e	6EM3	3/29/2011
606 f	6EM3	4/14/2011

Lot	Sire ID	AI Date
-----	---------	---------

Roll 8

607 a	6EM3	4/1/2011
607 b	6EM3	4/14/2011
607 c	6EM3	3/31/2011
607 d	6EM3	4/14/2011
607 e	6EM3	4/1/2011
608 a	6EM3	4/14/2011
608 b	6EM3	4/14/2011
608 c	6EM3	3/31/2011
608 d	6EM3	4/2/2011
608 e	6EM3	4/14/2011
609 a	6EM3	4/14/2011
609 b	6EM3	4/1/2011
609 c	6EM3	4/2/2011
609 d	6EM3	4/14/2011
609 e	6EM3	4/14/2011

Roll 9

610 a	6EM3	4/14/2011
610 b	6EM3	4/14/2011
610 c	6EM3	3/30/2011
610 d	6EM3	4/14/2011
610 e	6EM3	3/30/2011
611 a	6EM3	4/1/2011
611 b	6EM3	4/2/2011
611 c	6EM3	4/14/2011
611 d	6EM3	4/14/2011
611 e	6EM3	4/14/2011
612 a	6EM3	4/14/2011
612 b	6EM3	4/14/2011
612 c	6EM3	4/1/2011
612 d	6EM3	4/14/2011
612 e	6EM3	4/14/2011

Lot	Sire ID	AI Date
-----	---------	---------

Roll 10

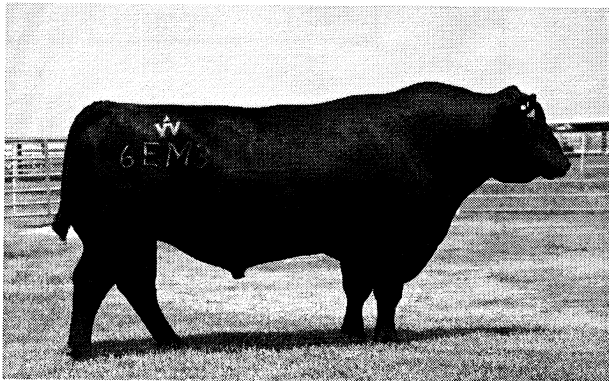
613 a	6EM3	4/1/2011
613 b	6EM3	3/31/2011
613 c	6EM3	4/14/2011
613 d	6EM3	3/31/2011
613 e	6EM3	3/30/2011
614 a	6EM3	4/1/2011
614 b	6EM3	4/14/2011
614 c	6EM3	4/14/2011
614 d	6EM3	4/1/2011
614 e	6EM3	4/2/2011
615 a	6EM3	4/1/2011
615 b	6EM3	4/2/2011
615 c	6EM3	4/2/2011
615 d	6EM3	4/2/2011
615 e	6EM3	3/30/2011

Roll 11

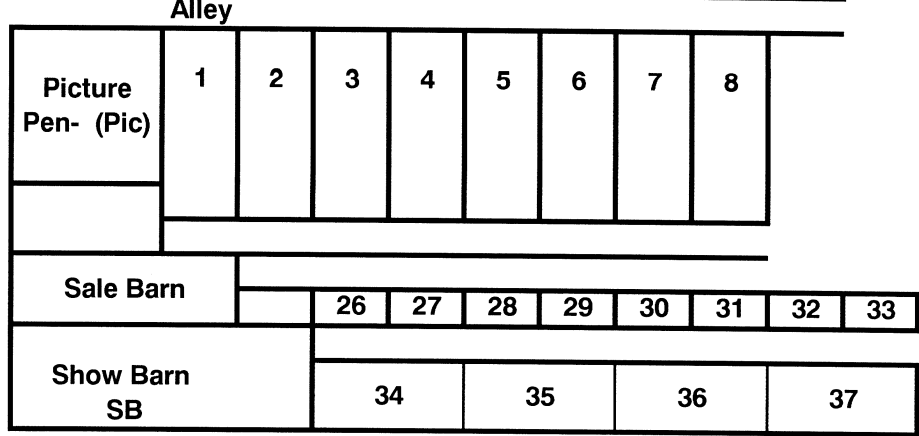
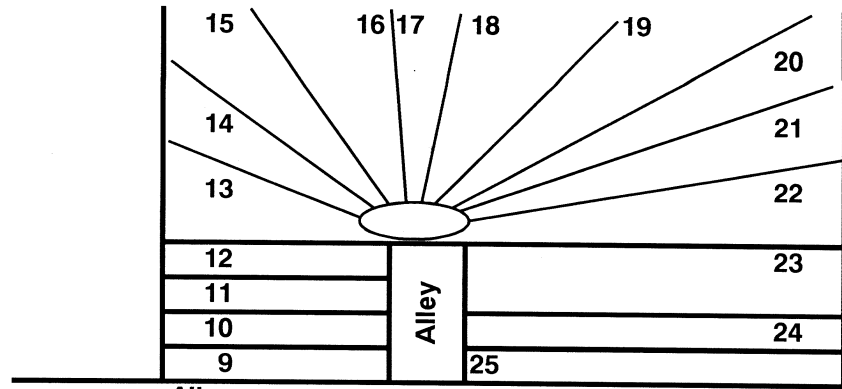
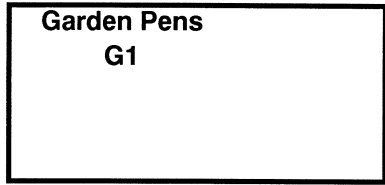
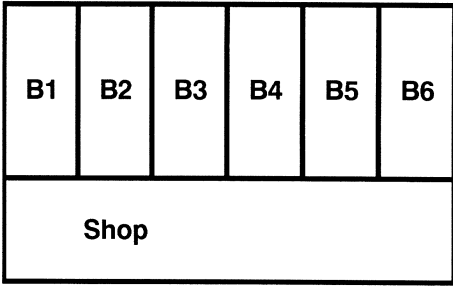
616 a	6EM3	4/14/2011
616 b	6EM3	4/14/2011
616 c	6EM3	4/14/2011
616 d	6EM3	4/14/2011
616 e	6EM3	4/14/2011
617 a	6EM3	4/14/2011
617 b	6EM3	4/14/2011
617 c	6EM3	4/1/2011
617 d	6EM3	3/31/2011
617 e	6EM3	4/1/2011
618 a	6EM3	3/30/2011
618 b	6EM3	4/14/2011
618 c	6EM3	3/31/2011
618 d	6EM3	4/1/2011
618 e	6EM3	4/1/2011

Roll 12

619 a	6EM3	4/1/2011
619 b	6EM3	4/14/2011
619 c	6EM3	4/14/2011
619 d	6EM3	4/14/2011
619 e	6EM3	4/14/2011
620 a	6EM3	4/1/2011
620 b	6EM3	3/31/2011
620 c	6EM3	4/2/2011



All Heifers were AI'd to 6EM3 and are now ready to run with your clean up sire.



LOT FINDER

Lot	Pen	Lot	Pen	Lot	Pen	Lot	Pen	Lot	Pen	Lot	Pen	Lot	Pen	Lot	Pen	Lot	Pen	Lot	Pen
1	B1	35	B3	69	Out	103	B6	221	Out	255	15	296	17	411	1	446	6	513	28
2	B1	36	Out	70	B5	104	B6	222	12	256	15	297	17	412	1	447	6	514	35
3	B1	37	B3	71	B5	105	B6	223	12	257	15	301	G1	413	1	448	6	515	35
4	B1	38	B3	72	B5	151	SB	224	12	258	15	302	G1	414	1	449	6	516	35
5	B1	39	B3	73	B5	152	SB	225	12	259	Out	303	G1	415	2	450	6	517	28
6	Out	40	B3	74	B5	153	SB	226	13	260	15	304	G1	416	2	451	6	518	35
7	B1	41	B3	75	B5	154	SB	227	13	261	15	305	G1	417	2	452	7	519	35
8	B1	42	B3	76	B5	155	SB	228	13	262	Out	306	G1	418	2	453	7	520	35
9	B1	43	B3	77	B5	156	SB	229	13	270	16	307	G1	419	2	454	7	521	35
10	B1	44	B3	78	B5	157	SB	230	13	271	16	308	G1	420	2	455	7	522	35
11	B1	45	B3	79	B5	158	SB	231	Out	272	16	309	G1	421	2	456	7	601	Pic
12	B1	46	B3	80	B5	159	SB	232	13	273	16	310	G1	422	2	457	7	602	Pic
13	B1	47	B3	81	B5	160	SB	233	13	274	16	311	G1	423	2	458	7	603	Pic
14	B1	48	B3	82	B5	161	SB	234	13	275	16	312	G1	424	2	459	7	604	29
15	B1	49	B3	83	B5	201	9	235	13	276	16	313	G1	425	2	460	7	605	36
16	B1	50	B3	84	B5	202	9	236	14	277	16	314	G1	426	2	461	7	606	36
17	B2	51	Out	85	B5	203	9	237	14	278	16	315	G1	427	2	462	7	607	29
18	Out	52	B4	86	B5	204	9	238	14	279	16	316	G1	428	3	463	7	608	36
19	B2	53	Out	87	B6	205	9	239	14	280	16	317	G1	429	3	464	7	609	36
20	B2	54	B4	88	B6	206	9	240	14	281	16	318	G1	430	3	465	7	610	30
21	Out	55	B4	89	B6	207	10	241	14	282	17	319	G1	431	3	466	7	611	36
22	Out	56	B4	90	B6	208	10	242	14	283	17	320	G1	432	3	467X	6	612	36
23	Out	57	Out	91	B6	209	Out	243	14	284	17	321	G1	433	3	501	8	613	30
24	Out	58	B4	92	B6	210	10	244	14	285	17	322	G1	434	3	502	8	614	37
25	Out	59	B4	93	B6	211	10	245	14	286	17	401	1	435	3	503	27	615	37
26	Out	60	B4	94	B6	212	10	246	14	287	17	402	1	436	3	504	34	616	31
27	B2	61	B4	95	Out	213	11	247	14	288	17	403	1	438	5	505	34	617	37
28	Out	62	B4	96	Out	214	11	248	15	289	17	404	1	439	5	506	34	618	37
29	B2	63	Out	97	B6	215	11	249	15	290	17	405	1	440	5	507	34	619	31
30	Out	64	B4	98	B6	216	11	250	15	291	17	406	Out	441	5	508	27	620	37
31	B2	65	B4	99	B6	217	11	251	15	292	17	407	1	442	5	509	34		
32	B2	66	B4	100	B6	218	11	252	15	293	17	408	1	443	5	510	34		
33	B2	67	B4	101	B6	219	12	253	15	294	17	409	1	444	5	511	34		
34	B3	68	B4	102	B6	220	12	254	15	295	17	410	1	445	5	512	34		